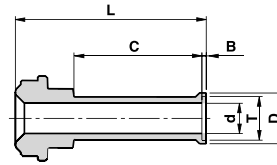


GS-S

SHORT GLAND

With shoulder

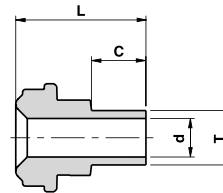


Ordering Information	Face Seal Size	L		C		d		B		D		T	W.T.	
	inch	mm	inch	mm	inch	mm	inch	mm	inch	mm	inch	inch / mm	mm	inch
V-GS-1/4-S	1/4	28.5	1.12	19.1	0.75	4.6	0.18	0.6	0.02	7.4	0.29	1/4"	-	0.035
V-GS-3/8-S	1/2	29.2	1.15	19.1	0.75	7.7	0.30	0.8	0.03	10.4	0.41	3/8"	-	0.035
V-GS-1/2-S	1/2	29.4	1.16	19.1	0.75	10.2	0.40	1.0	0.04	14.0	0.55	1/2"	-	0.049
V-GS-1/2-S W.T.=0.065	1/2	29.4	1.16	19.1	0.75	9.5	0.37	1.0	0.04	14.0	0.55	1/2"	-	0.065
P-GS-3/4-S W.T.=0.049	3/4	30.0	1.18	19.1	0.75	16.6	0.65	1.0	0.04	20.3	0.80	3/4"	-	0.049
P-GS-3/4-S W.T.=0.065	3/4	30.0	1.18	19.1	0.75	15.8	0.62	1.0	0.04	20.3	0.80	3/4"	-	0.065
P-GS-1-S W.T.=0.065	1	32.1	1.26	19.1	0.75	22.1	0.87	1.0	0.04	26.9	1.06	1"	-	0.065
V-GS-6MM-S	1/4	30.0	1.18	19.1	0.75	4.0	0.16	0.5	0.02	7.0	0.27	6mm	1.00	-
V-GS-8MM-S	1/4	30.2	1.19	19.1	0.75	6.0	0.24	0.8	0.03	8.9	0.35	8mm	1.00	-
V-GS-10MM-S	1/2	31.0	1.22	19.1	0.75	8.0	0.31	0.8	0.03	10.9	0.43	10mm	1.00	-
V-GS-12MM-S	1/2	30.5	1.20	19.1	0.75	10.0	0.39	1.0	0.04	13.2	0.52	12mm	1.00	-
P-GS-18MM-S	3/4	31.0	1.22	19.1	0.75	15.0	0.59	1.0	0.04	19.3	0.76	18mm	1.50	-

MGS-W

MINI SHORT GLAND

Without shoulder



Ordering Information	Face Seal Size	L		C		d		T	W.T.	
	inch	mm	inch	mm	inch	mm	inch	inch / mm	mm	inch
V-MGS-1/4-W	1/4	15.2	0.60	6.4	0.25	4.6	0.18	1/4"	-	0.035
V-MGS-3/8-W	1/2	15.8	0.62	6.4	0.25	7.7	0.30	3/8"	-	0.035
V-MGS-1/2-W	1/2	15.8	0.62	6.4	0.25	10.2	0.40	1/2"	-	0.049
V-MGS-1/2-W W.T.=0.065	1/2	15.8	0.62	6.4	0.25	9.5	0.37	1/2"	-	0.065
V-MGS-6MM-W	1/4	15.2	0.60	6.4	0.25	4.0	0.16	6mm	1.00	-
V-MGS-8MM-W	1/4	15.8	0.62	6.4	0.25	6.0	0.24	8mm	1.00	-
V-MGS-10MM-W	1/2	15.8	0.62	6.4	0.25	8.0	0.31	10mm	1.00	-
V-MGS-12MM-W	1/2	15.8	0.62	6.4	0.25	10.0	0.39	12mm	1.00	-

Dimensions are for reference only, and are subject to change without notice.
When ordering, be sure to add the Surface-Finish Designator (either H or E) to the Part Number. (See Material Table, page 157).